

Hogwarts Castle The Great Hall

3D

Puzzle



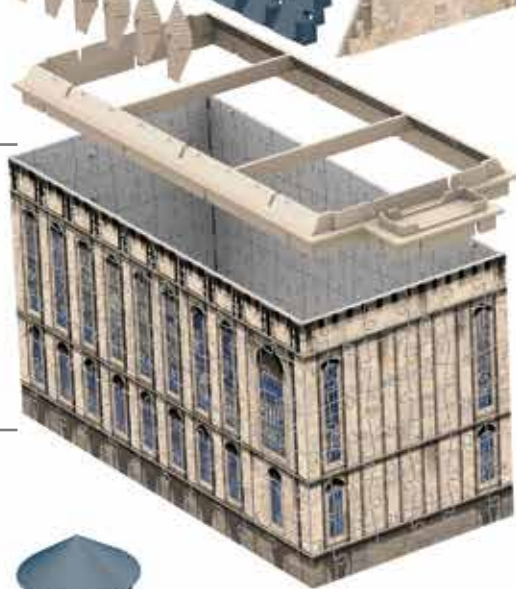
Ravensburger Verlag GmbH
Postfach 2460 · D-88194 Ravensburg · www.ravensburger.com

Distr. CH: Carlit + Ravensburger AG
Grundstr. 9 · CH-5436 Würenlos

Ravensburger



1-192



525-540



499-524



307-498



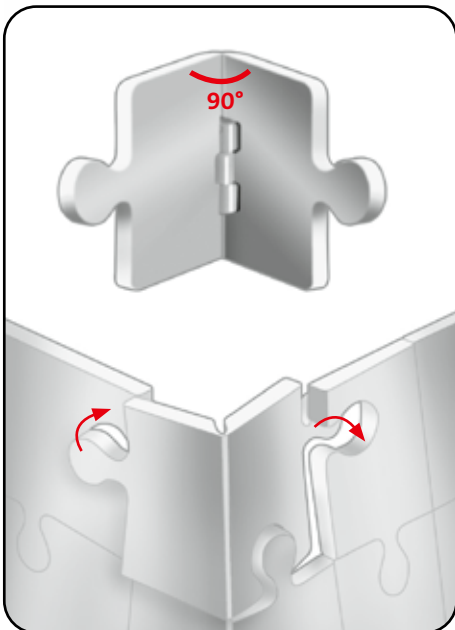
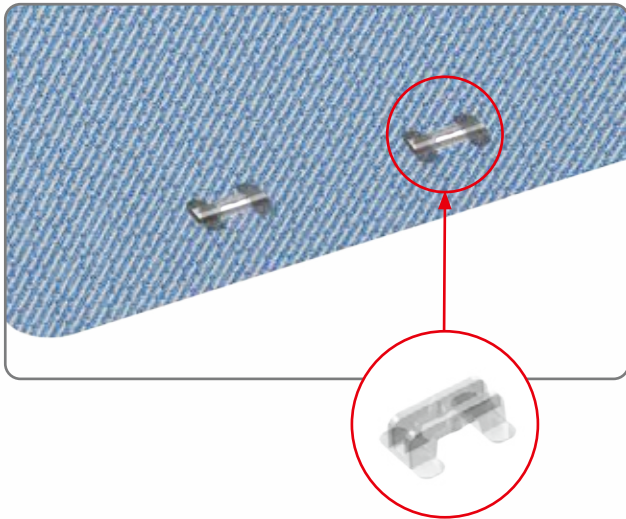
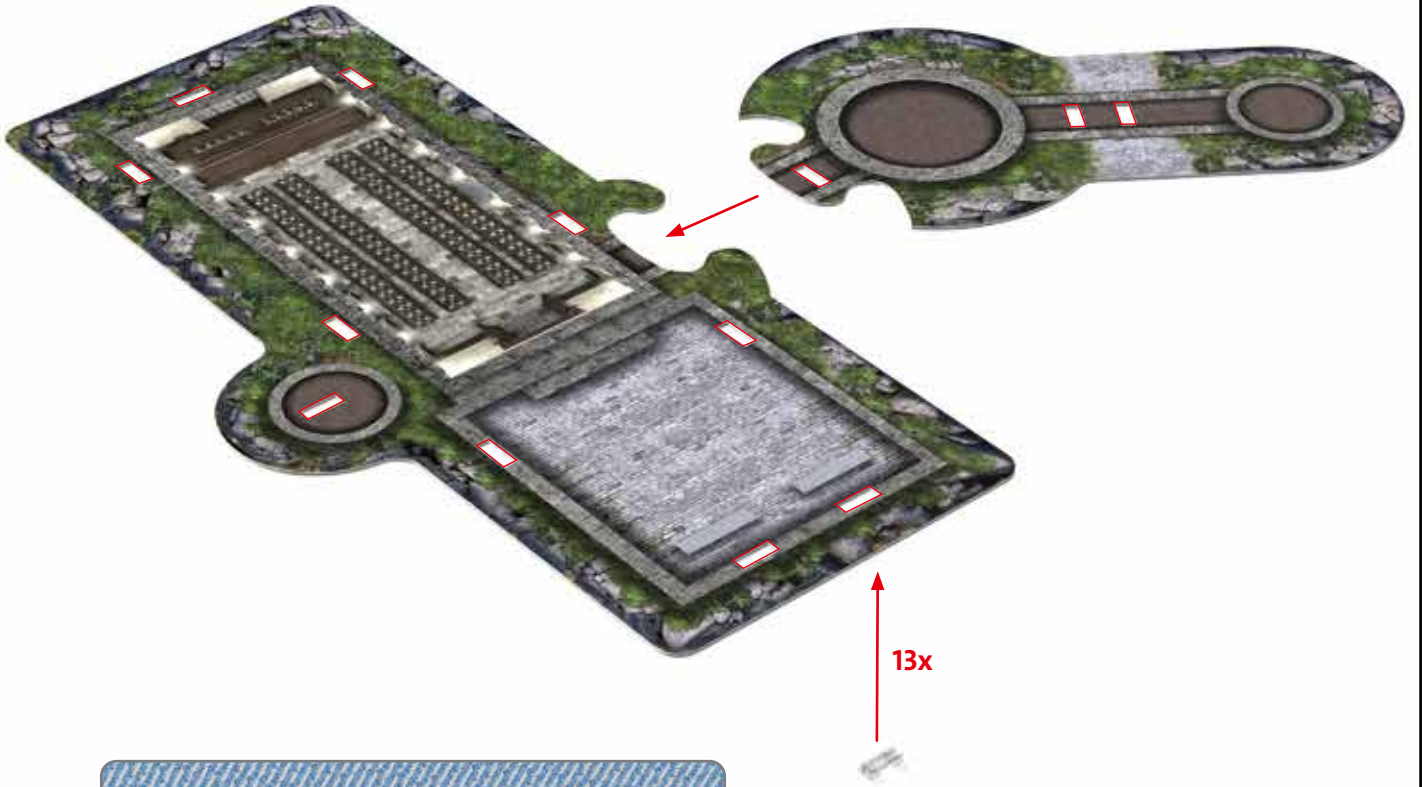
283-306



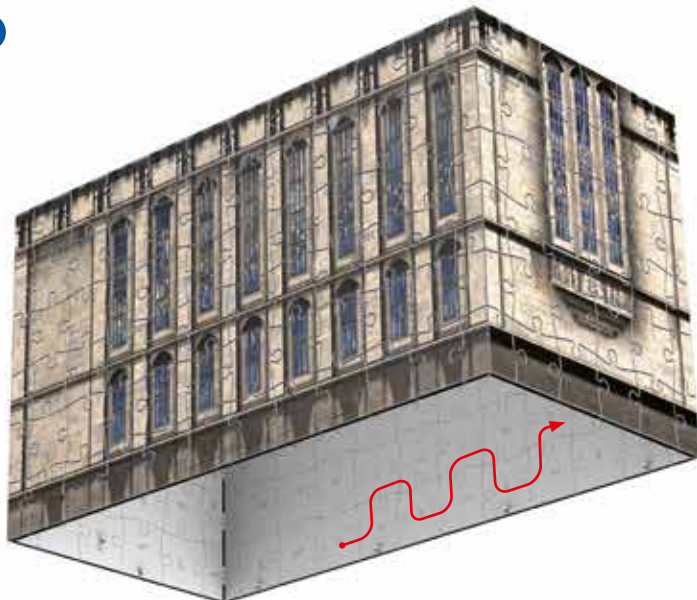
193-282



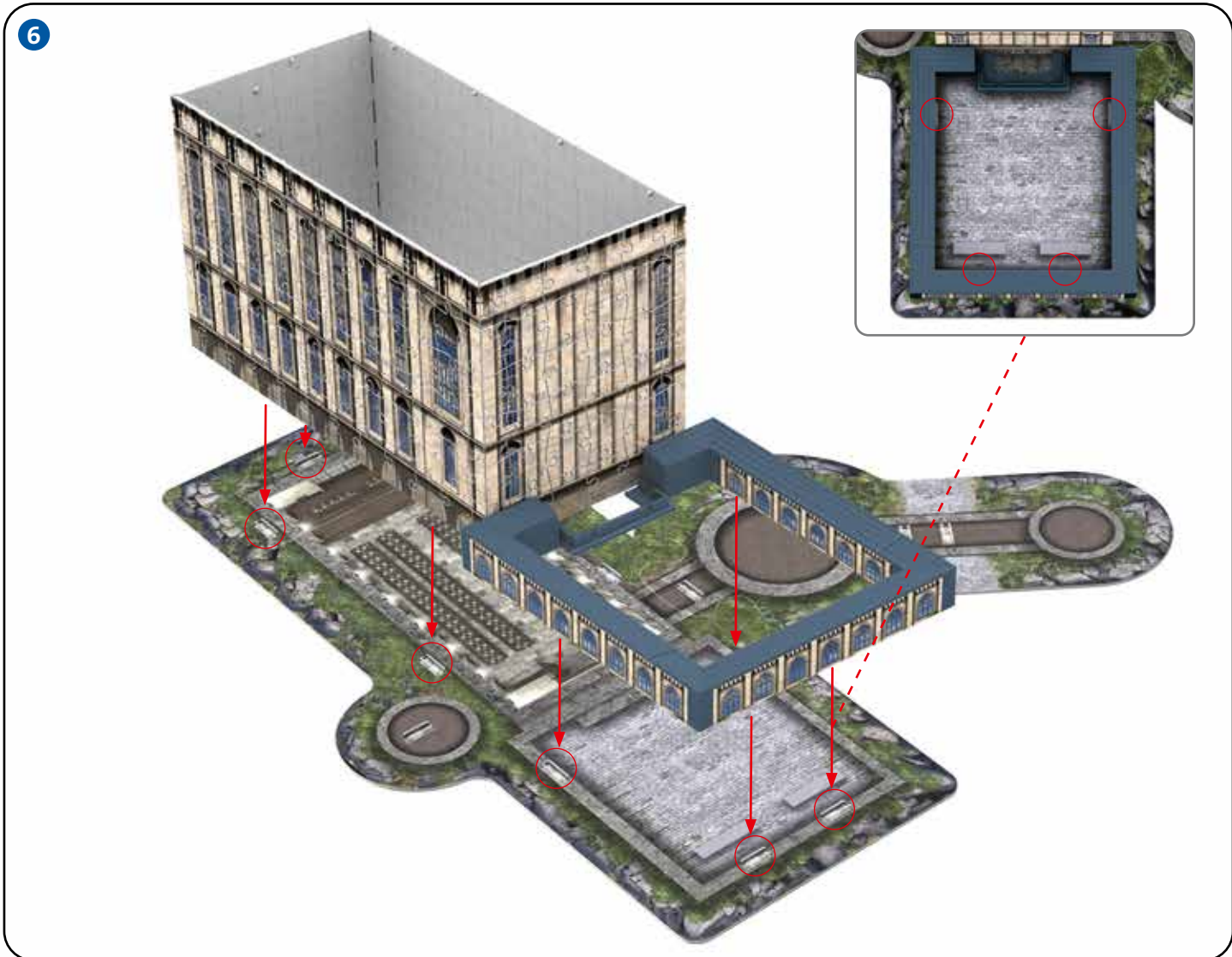
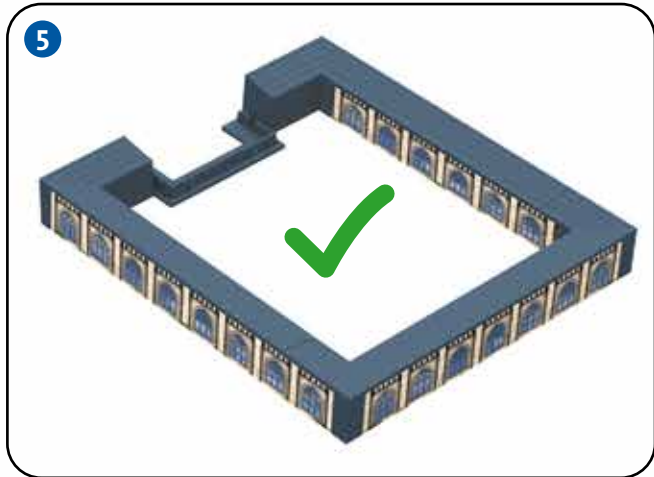
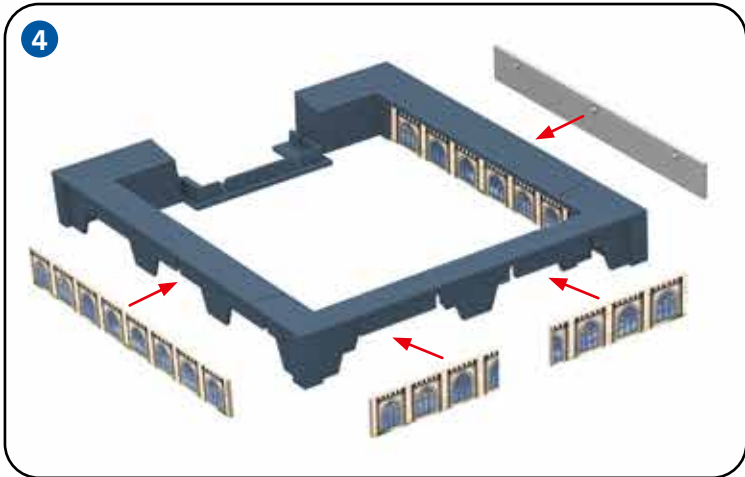
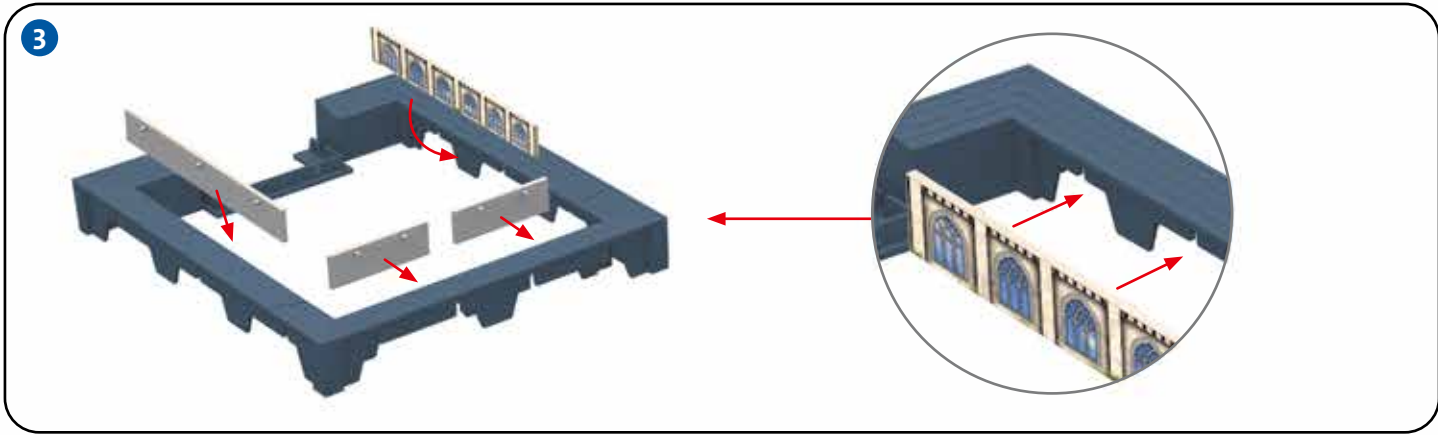
1

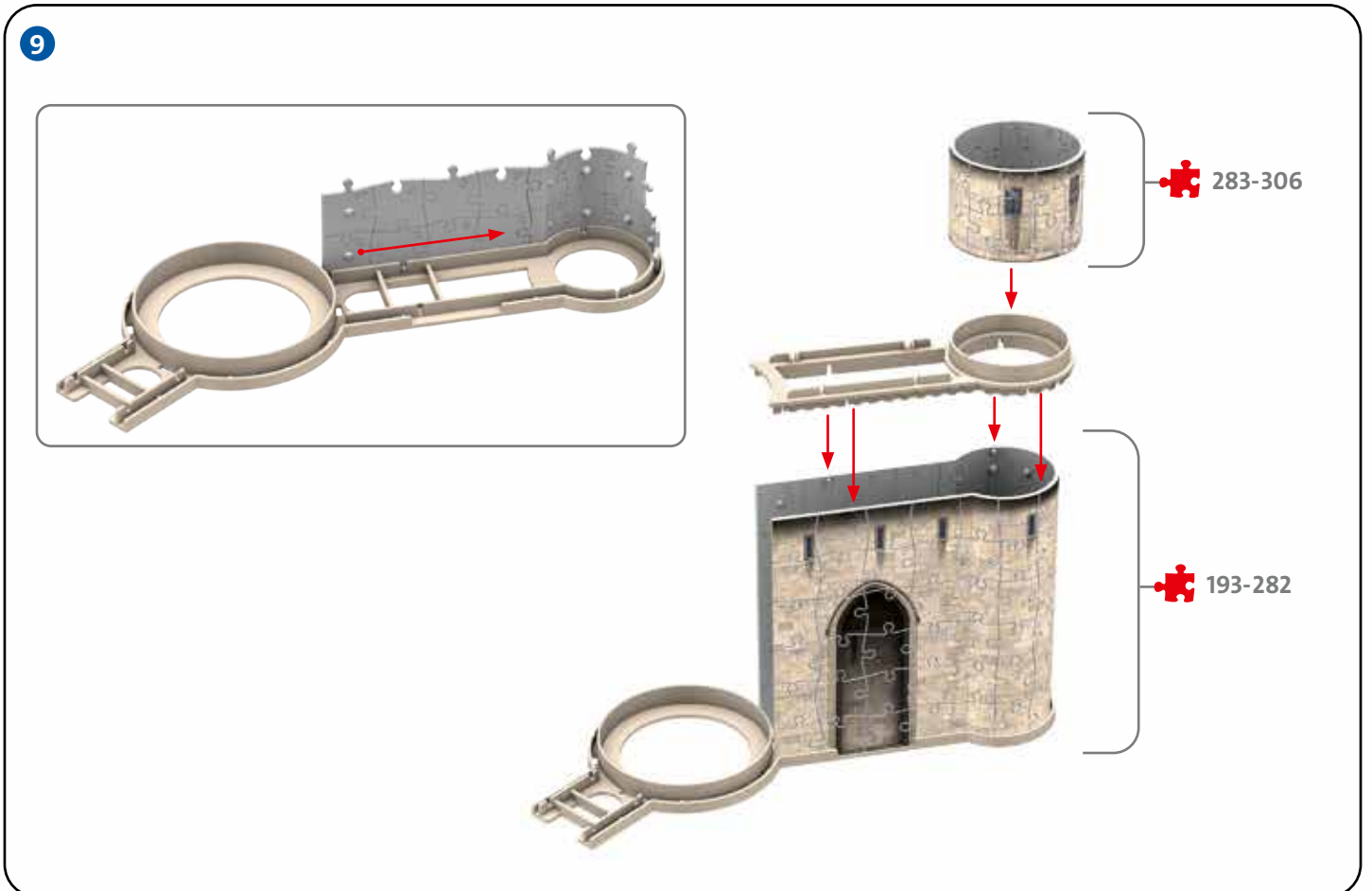
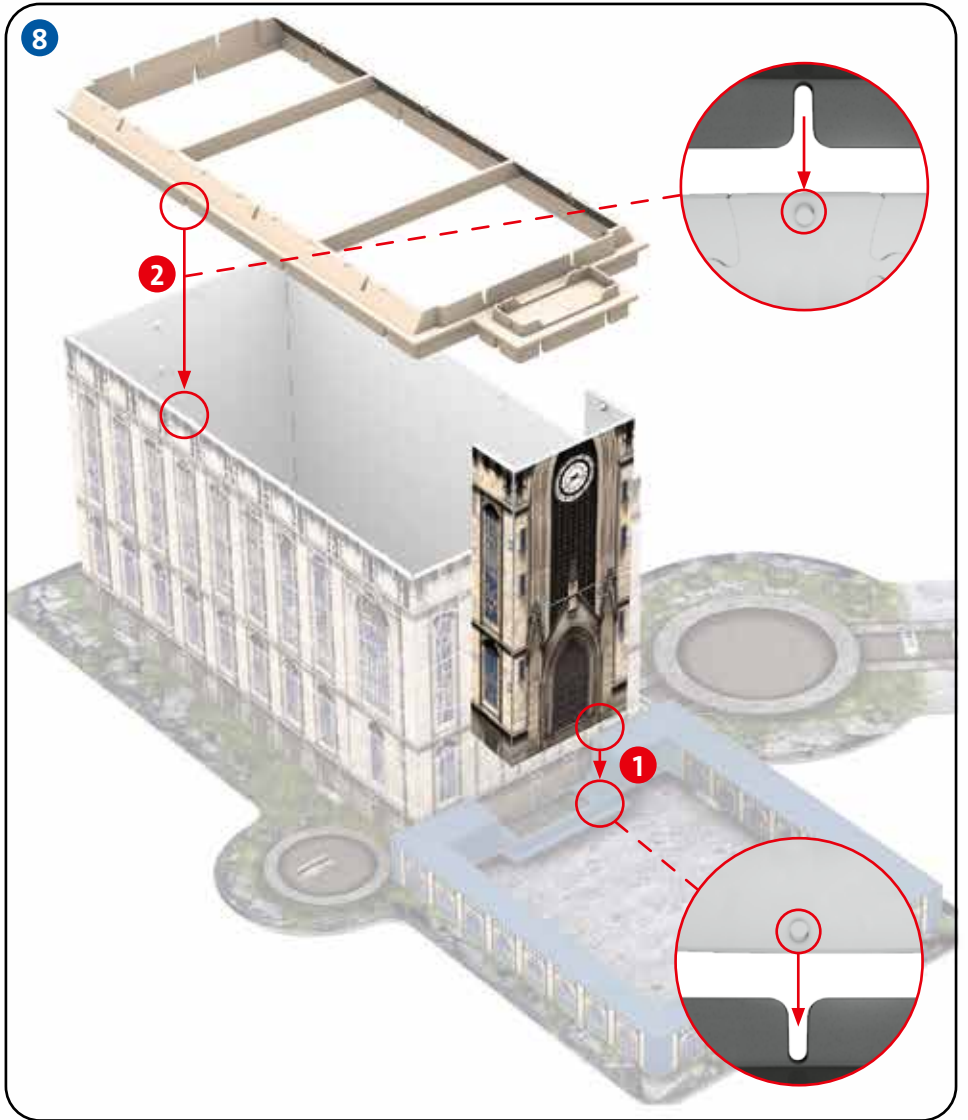
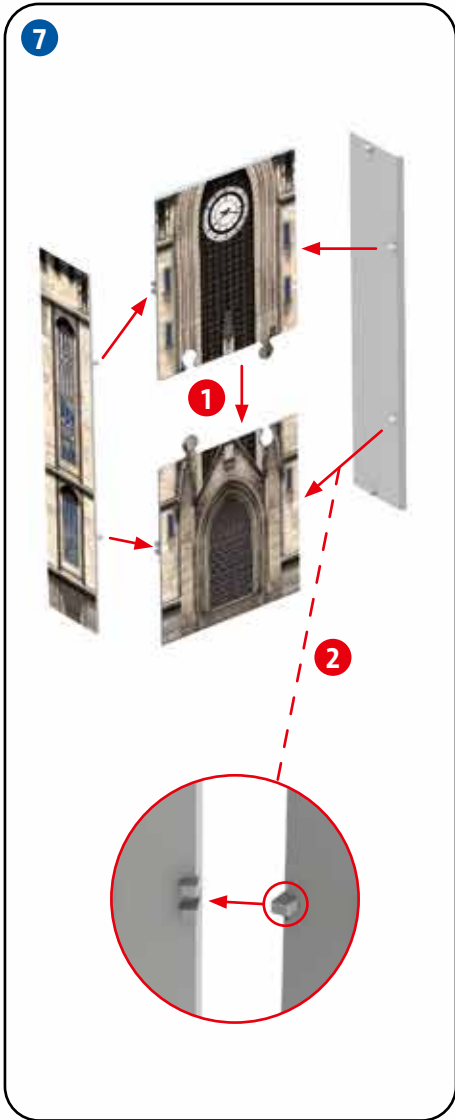


2

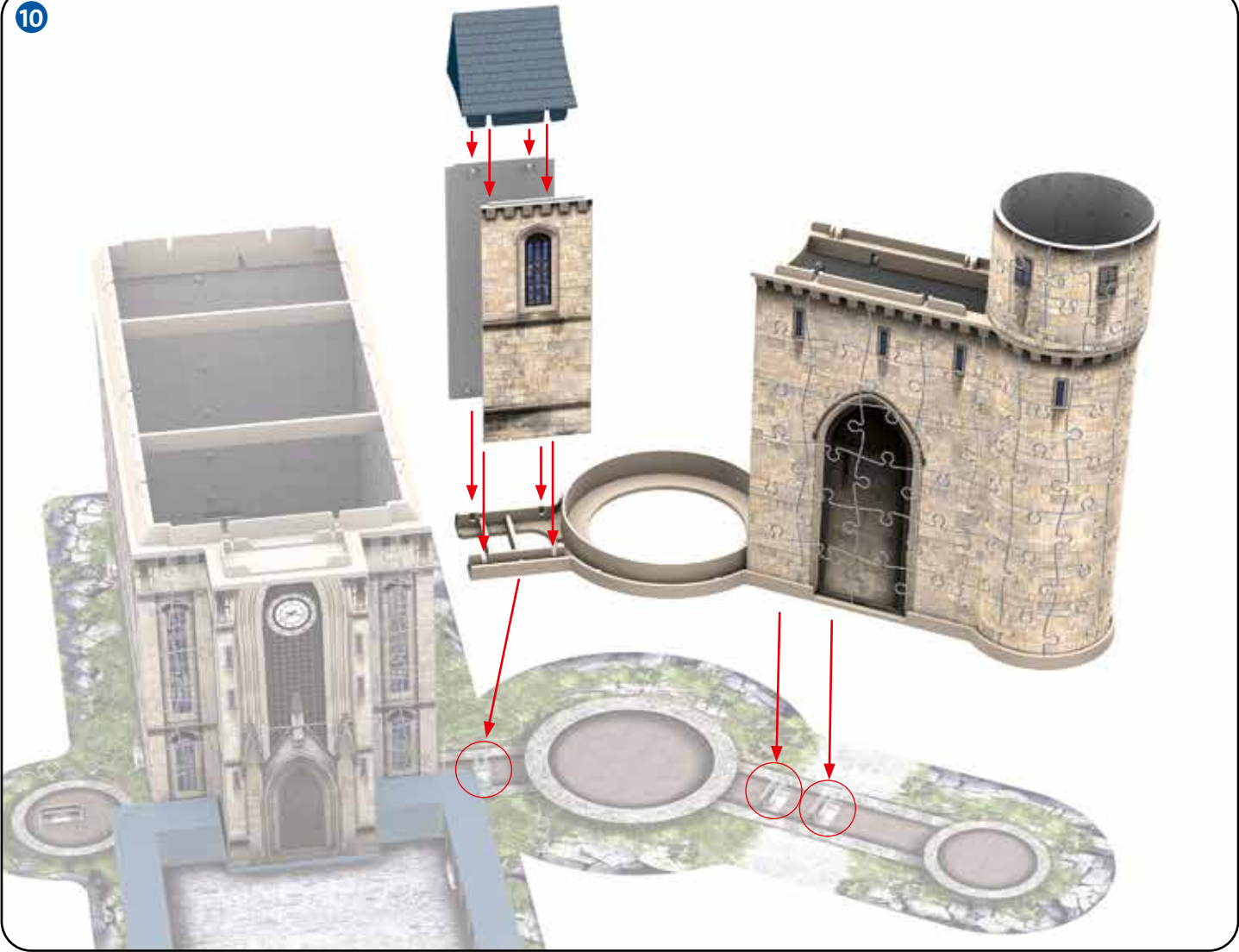


1-192

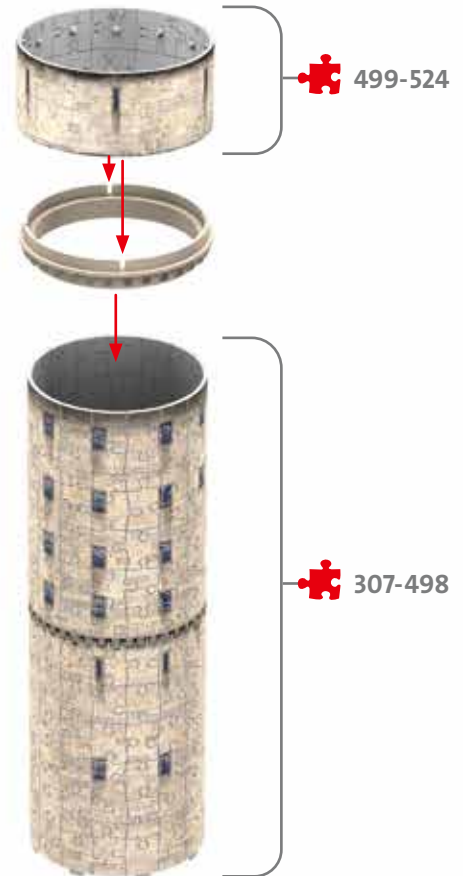
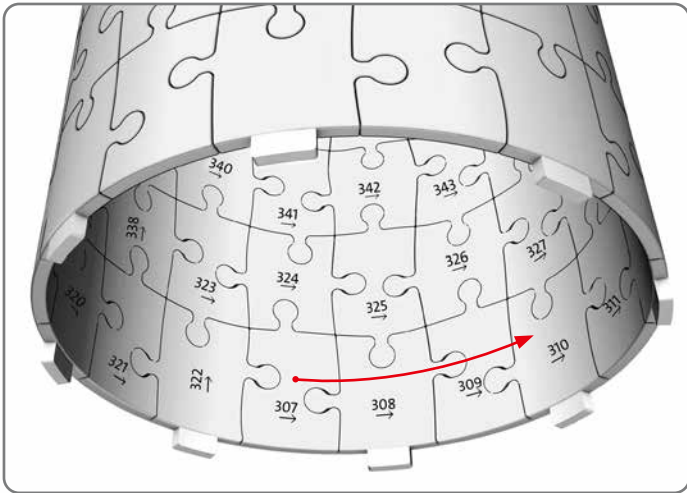




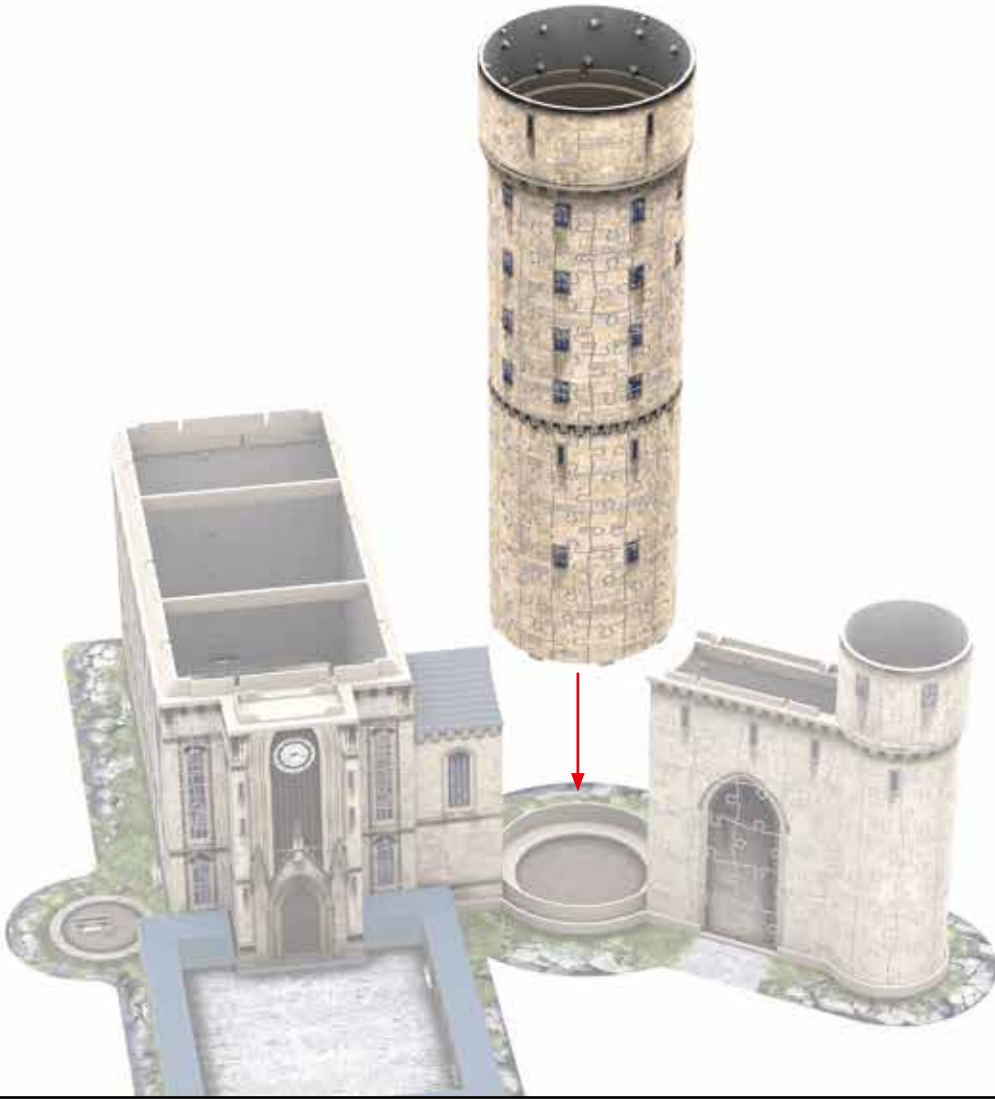
10



11



12



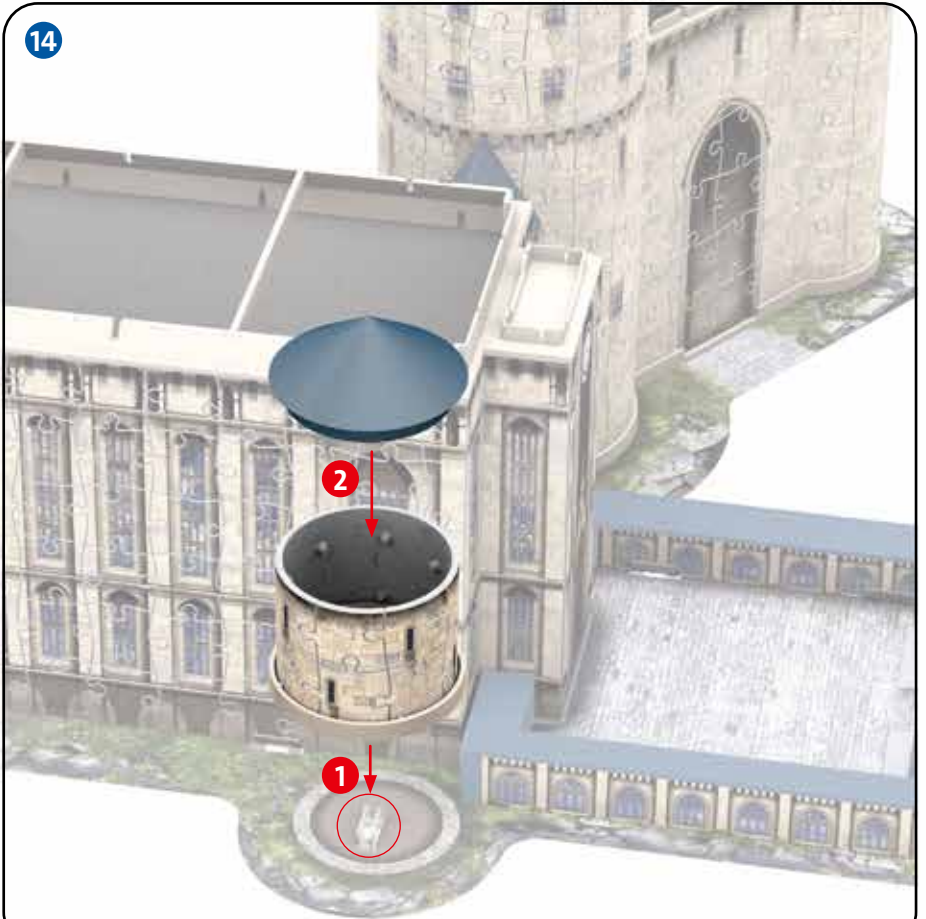
13



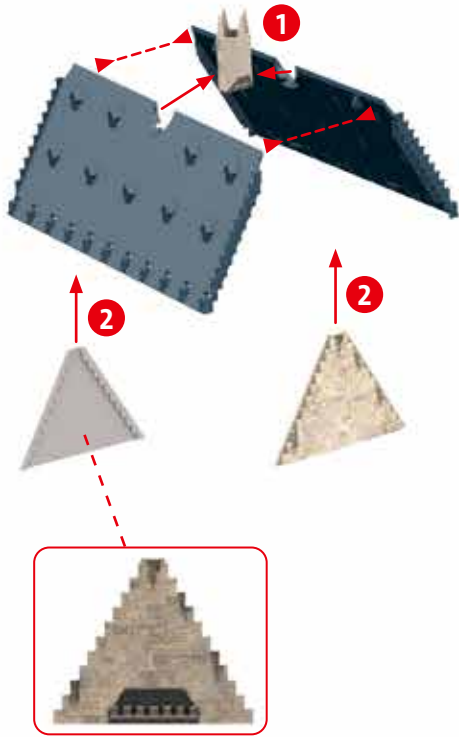
525-540



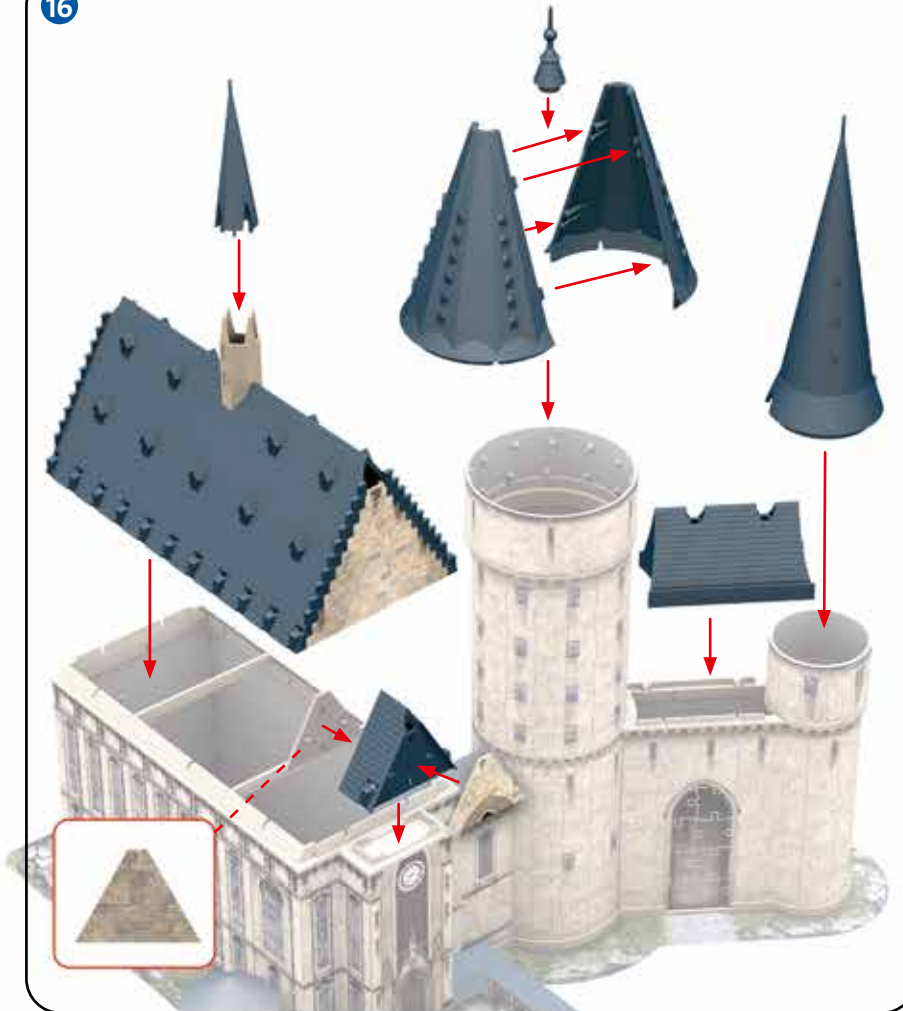
14



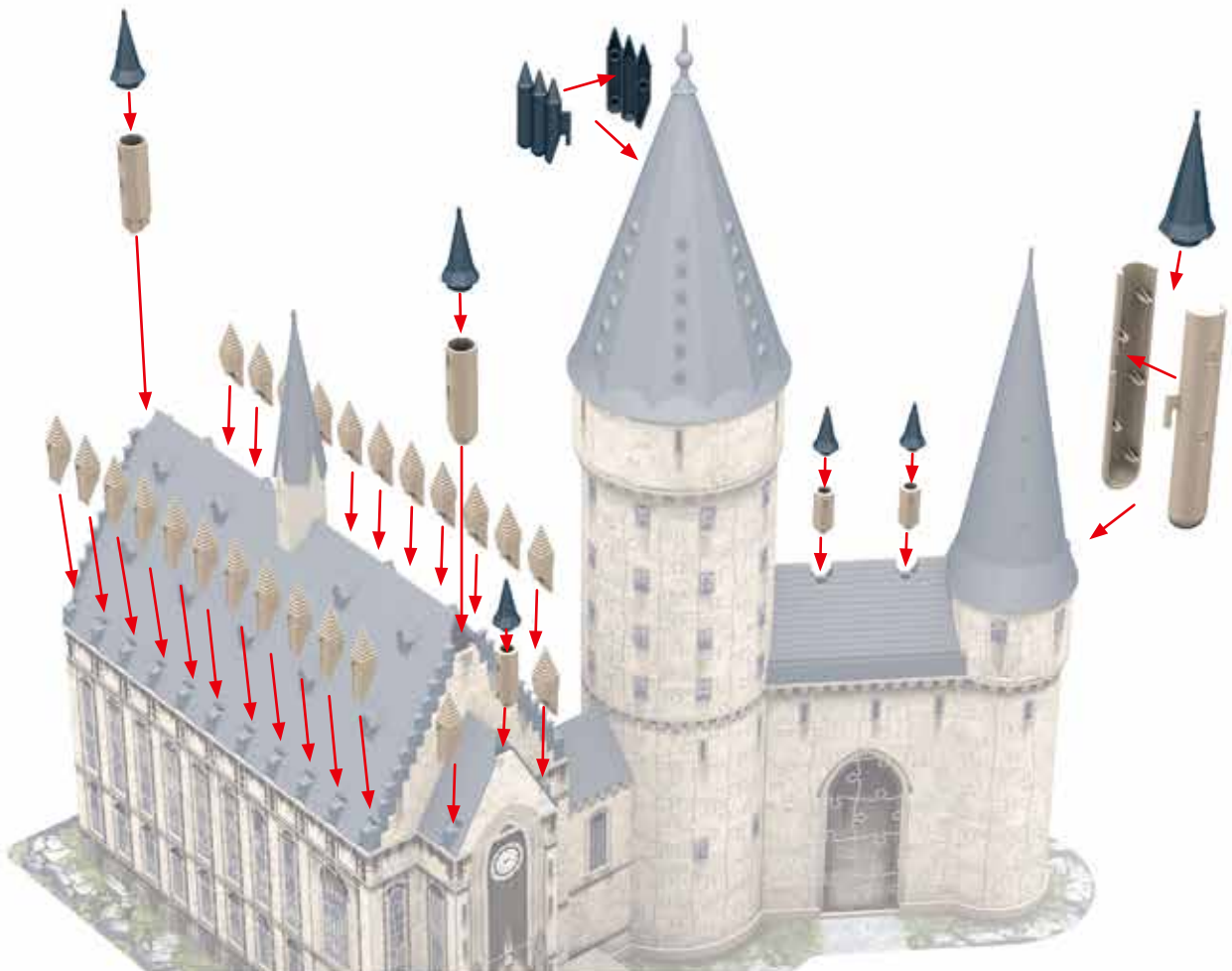
15

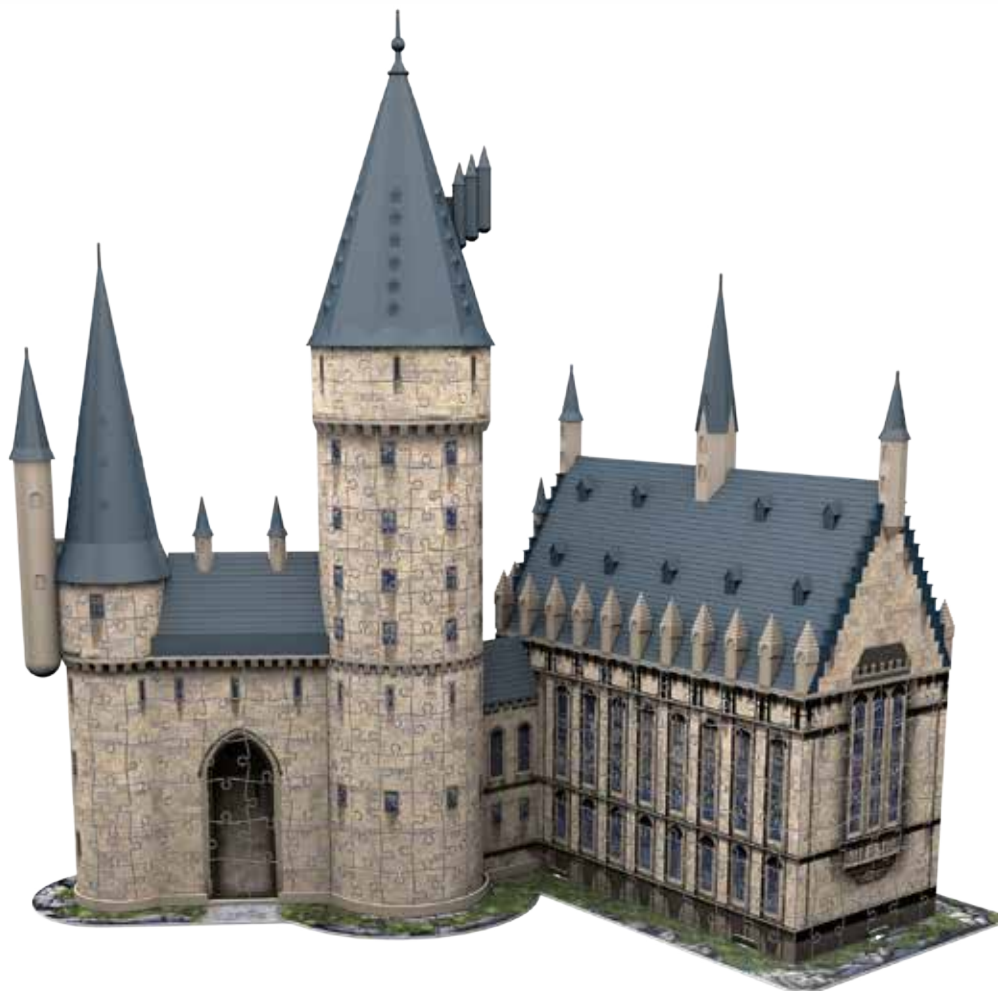


16



17









Harry Potter Knight Bus
No. 11 158 9



Pencil Cup Harry Potter
No. 11 154 1



Storage Box Harry Potter
No. 11 258 6